

THIS COPY HAS BEEN MADE BY OR WITH THE AUTHORITY OF RYEDALE DISTRICT COUNCIL PURSUANT TO SECTION 41 OF THE COPYRIGHT DESIGNS AND PATENTS ACT 1988. UNLESS THAT ACT PROVIDES A RELEVANT EXCEPTION TO COPYRIGHT, THE COPY MUST NOT BE COPIED WITHOUT THE PRIOR PERMISSION OF THE COPYRIGHT OWNER.

REVISED PLAN



- Rev. K 16.02.18 ART 15 Elevations amended
- Rev. J 01.11.17 Elevations amended
- Rev. H 16.10.17 Art. 4 amended
- Rev. G 04.10.17 Art. 10 windows amended
- Rev. F 30.09.17 Art. 10 added
- Rev. E 08.08.17 Art. 10 added and additional ramp added
- Rev. D 02.06.17 Flue amended
- Rev. C 21.07.17 Boiler flue added
- Rev. B 10.07.17 Boiler room added
- Rev. A 28.06.17 W27 changed to escape window

client	WILLOW DEVELOPMENTS LTD		
project	LEAT HOUSE NORTON		
drawing	ELEVATION A AS PROPOSED		
date	FEB 2017	status	
scale	1:50 @ A1	revision	K
number	W102.01.18		

RIBA

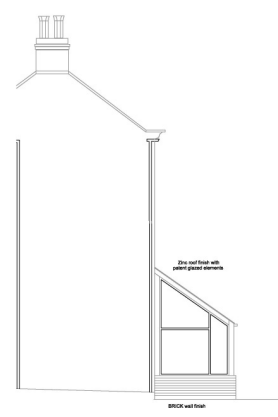
BrierleyGroom
Chartered Architects

BrierleyGroom LLP
25-27 The Quadrant
Norton Business Park, 10000 Norton
Leeds, LS27 8TA
0113 255 1718
www.brierleygroom.co.uk

© RIBA/BrierleyGroom
Norton Business Park, 10000 Norton
Leeds, LS27 8TA
0113 255 1718
www.brierleygroom.co.uk

THIS COPY HAD BEEN MADE BY OR WITH THE AUTHORITY OF RYEDALE DISTRICT COUNCIL PURSUANT TO SECTION 41 OF THE COPYRIGHT DESIGN AND PATENTS ACT 1988. UNLESS THAT ACT PROVIDES A RELEVANT EXCEPTION TO COPYRIGHT, THE COPY MUST NOT BE COPIED WITHOUT THE PRIOR PERMISSION OF THE COPYRIGHT OWNER.

REVISED PLAN



Rev. D: 16.02.18 APT 10 Elevations amended
 Rev. C: 05.11.17 Elevation amended
 Rev. B: 06.10.17 Apt. 10 bay added
 Rev. A: 05.05.17 All bricks and additional rears added

RIBA 注册

BrierleyGroom
 Chartered Architects

BrierleyGroom LLP
 Registered Office: 100-101, The
 Quadrant, Brighton, East Sussex, BN1 1UG
 Tel: 01273 202010
 Fax: 01273 202011
 Email: info@brierleygroom.co.uk
 Website: www.brierleygroom.co.uk

client	WILLOW DEVELOPMENTS LTD		
project	LEAT HOUSE NORTON		
drawing	ELEVATION B AS PROPOSED		
date	FEB 2017	scale	D
mark	1:50 @ A1	revision	
number	W102.01.19		

THIS COPY HAS BEEN MADE BY OR WITH THE AUTHORITY OF RYEDALE DISTRICT COUNCIL PURSUANT TO SECTION 41 OF THE COPYRIGHT DESIGNS AND PATENTS ACT 1988. UNLESS THAT ACT PROVIDES A RELEVANT EXCEPTION TO COPYRIGHT, THE COPY MUST NOT BE COPIED WITHOUT THE PRIOR PERMISSION OF THE COPYRIGHT OWNER.

REVISED PLAN



Elevation C - C

Rev. F 16.03.18 APD 10 Elevations amended
 Rev. E 27.11.17 Elevations amended
 Rev. D 01.11.17 Elevations amended
 Rev. C 30.08.17 App 10 added
 Rev. B 08.08.17 Air bricks and additional ramps added
 Rev. A 21.07.17 Boiler Flue added

client	WILLOW DEVELOPMENTS LTD		
project	LEAT HOUSE NORTON		
drawing	ELEVATION C AS PROPOSED		
date	FEB 2017	status	
scale	1:50 @ A1	revision	F
number	W102.01.20		

RIBA

BrierleyGroom
 Chartered Architects

BrierleyGroom LLP
 100, 101, 102, 103, 104, 105, 106, 107, 108, 109, 110, 111, 112, 113, 114, 115, 116, 117, 118, 119, 120, 121, 122, 123, 124, 125, 126, 127, 128, 129, 130, 131, 132, 133, 134, 135, 136, 137, 138, 139, 140, 141, 142, 143, 144, 145, 146, 147, 148, 149, 150, 151, 152, 153, 154, 155, 156, 157, 158, 159, 160, 161, 162, 163, 164, 165, 166, 167, 168, 169, 170, 171, 172, 173, 174, 175, 176, 177, 178, 179, 180, 181, 182, 183, 184, 185, 186, 187, 188, 189, 190, 191, 192, 193, 194, 195, 196, 197, 198, 199, 200, 201, 202, 203, 204, 205, 206, 207, 208, 209, 210, 211, 212, 213, 214, 215, 216, 217, 218, 219, 220, 221, 222, 223, 224, 225, 226, 227, 228, 229, 230, 231, 232, 233, 234, 235, 236, 237, 238, 239, 240, 241, 242, 243, 244, 245, 246, 247, 248, 249, 250, 251, 252, 253, 254, 255, 256, 257, 258, 259, 260, 261, 262, 263, 264, 265, 266, 267, 268, 269, 270, 271, 272, 273, 274, 275, 276, 277, 278, 279, 280, 281, 282, 283, 284, 285, 286, 287, 288, 289, 290, 291, 292, 293, 294, 295, 296, 297, 298, 299, 300, 301, 302, 303, 304, 305, 306, 307, 308, 309, 310, 311, 312, 313, 314, 315, 316, 317, 318, 319, 320, 321, 322, 323, 324, 325, 326, 327, 328, 329, 330, 331, 332, 333, 334, 335, 336, 337, 338, 339, 340, 341, 342, 343, 344, 345, 346, 347, 348, 349, 350, 351, 352, 353, 354, 355, 356, 357, 358, 359, 360, 361, 362, 363, 364, 365, 366, 367, 368, 369, 370, 371, 372, 373, 374, 375, 376, 377, 378, 379, 380, 381, 382, 383, 384, 385, 386, 387, 388, 389, 390, 391, 392, 393, 394, 395, 396, 397, 398, 399, 400, 401, 402, 403, 404, 405, 406, 407, 408, 409, 410, 411, 412, 413, 414, 415, 416, 417, 418, 419, 420, 421, 422, 423, 424, 425, 426, 427, 428, 429, 430, 431, 432, 433, 434, 435, 436, 437, 438, 439, 440, 441, 442, 443, 444, 445, 446, 447, 448, 449, 450, 451, 452, 453, 454, 455, 456, 457, 458, 459, 460, 461, 462, 463, 464, 465, 466, 467, 468, 469, 470, 471, 472, 473, 474, 475, 476, 477, 478, 479, 480, 481, 482, 483, 484, 485, 486, 487, 488, 489, 490, 491, 492, 493, 494, 495, 496, 497, 498, 499, 500, 501, 502, 503, 504, 505, 506, 507, 508, 509, 510, 511, 512, 513, 514, 515, 516, 517, 518, 519, 520, 521, 522, 523, 524, 525, 526, 527, 528, 529, 530, 531, 532, 533, 534, 535, 536, 537, 538, 539, 540, 541, 542, 543, 544, 545, 546, 547, 548, 549, 550, 551, 552, 553, 554, 555, 556, 557, 558, 559, 560, 561, 562, 563, 564, 565, 566, 567, 568, 569, 570, 571, 572, 573, 574, 575, 576, 577, 578, 579, 580, 581, 582, 583, 584, 585, 586, 587, 588, 589, 590, 591, 592, 593, 594, 595, 596, 597, 598, 599, 600, 601, 602, 603, 604, 605, 606, 607, 608, 609, 610, 611, 612, 613, 614, 615, 616, 617, 618, 619, 620, 621, 622, 623, 624, 625, 626, 627, 628, 629, 630, 631, 632, 633, 634, 635, 636, 637, 638, 639, 640, 641, 642, 643, 644, 645, 646, 647, 648, 649, 650, 651, 652, 653, 654, 655, 656, 657, 658, 659, 660, 661, 662, 663, 664, 665, 666, 667, 668, 669, 670, 671, 672, 673, 674, 675, 676, 677, 678, 679, 680, 681, 682, 683, 684, 685, 686, 687, 688, 689, 690, 691, 692, 693, 694, 695, 696, 697, 698, 699, 700, 701, 702, 703, 704, 705, 706, 707, 708, 709, 710, 711, 712, 713, 714, 715, 716, 717, 718, 719, 720, 721, 722, 723, 724, 725, 726, 727, 728, 729, 730, 731, 732, 733, 734, 735, 736, 737, 738, 739, 740, 741, 742, 743, 744, 745, 746, 747, 748, 749, 750, 751, 752, 753, 754, 755, 756, 757, 758, 759, 760, 761, 762, 763, 764, 765, 766, 767, 768, 769, 770, 771, 772, 773, 774, 775, 776, 777, 778, 779, 780, 781, 782, 783, 784, 785, 786, 787, 788, 789, 790, 791, 792, 793, 794, 795, 796, 797, 798, 799, 800, 801, 802, 803, 804, 805, 806, 807, 808, 809, 810, 811, 812, 813, 814, 815, 816, 817, 818, 819, 820, 821, 822, 823, 824, 825, 826, 827, 828, 829, 830, 831, 832, 833, 834, 835, 836, 837, 838, 839, 840, 841, 842, 843, 844, 845, 846, 847, 848, 849, 850, 851, 852, 853, 854, 855, 856, 857, 858, 859, 860, 861, 862, 863, 864, 865, 866, 867, 868, 869, 870, 871, 872, 873, 874, 875, 876, 877, 878, 879, 880, 881, 882, 883, 884, 885, 886, 887, 888, 889, 890, 891, 892, 893, 894, 895, 896, 897, 898, 899, 900, 901, 902, 903, 904, 905, 906, 907, 908, 909, 910, 911, 912, 913, 914, 915, 916, 917, 918, 919, 920, 921, 922, 923, 924, 925, 926, 927, 928, 929, 930, 931, 932, 933, 934, 935, 936, 937, 938, 939, 940, 941, 942, 943, 944, 945, 946, 947, 948, 949, 950, 951, 952, 953, 954, 955, 956, 957, 958, 959, 960, 961, 962, 963, 964, 965, 966, 967, 968, 969, 970, 971, 972, 973, 974, 975, 976, 977, 978, 979, 980, 981, 982, 983, 984, 985, 986, 987, 988, 989, 990, 991, 992, 993, 994, 995, 996, 997, 998, 999, 1000



- Rev. K - 16.02.18. AET 10. Elevations amended
- Rev. J - 27.11.17. Elevations amended
- Rev. H - 01.11.17. Elevations amended
- Rev. F - 06.03.17. Apt. 10 top added
- Rev. E - 30.09.17. Apt. 10 added
- Rev. D - 08.08.17. Air bricks and additional steps added
- Rev. C - 21.02.17. Boiler flue added
- Rev. B - 10.07.17. Boiler Room added
- Rev. A - 28.06.17. W32 changed to escape window

client	WILLOW DEVELOPMENTS LTD		
project	LEAT HOUSE NORTON		
drawing	ELEVATION D AS PROPOSED		
date	FEB 2017	status	
scale	1:50 @ A1	revision	K
number	W102.01.21		

RIBA

BrierleyGroom
Chartered Architects

BrierleyGroom LLP
Incorporated in England
0203202240
0203202218
Head Office: 45 Abchurch Lane, London EC4N 3DF
45 Abchurch Lane, London EC4N 3DF
0203202240
0203202218